

Replacement Drop Board

Your new drop board is made "Starboard", a UV stabilized, marine grade polymer. It will not delaminate, rot, swell or splinter and requires no finishing or maintenance.

The location and fit of the companionway hatch on each Precision yacht varies slightly from one boat to another because of hatch fiberglass

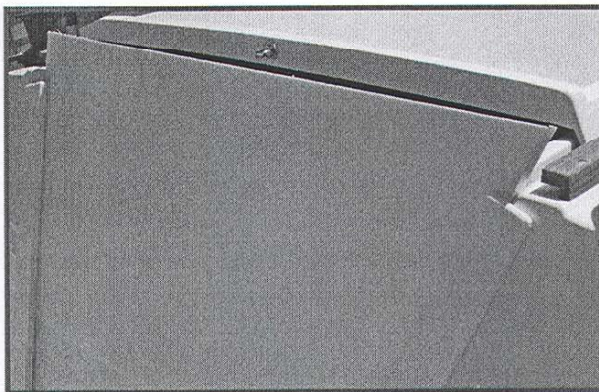
Tools required

- Pencil
- Saber Saw
- Sander or sanding block

Instructions

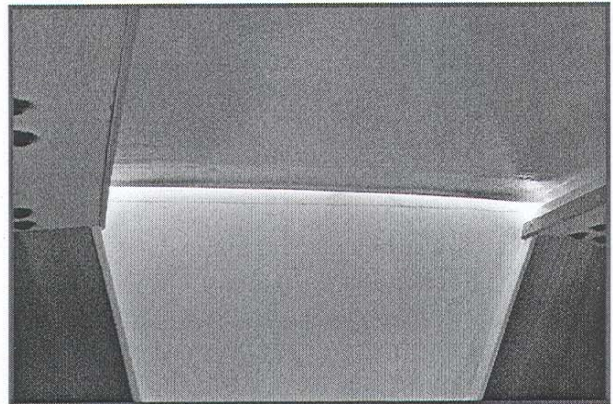
If your existing drop boards are still intact and fit properly you can simply trace them onto the new boards and cut the top with a saber saw. If not you will have to start from scratch.

Place the drop boards in the companionway guides with the sliding hatch open. Be certain that the bottom board slides all the way to the bottom of the slot. If not, you will need to sand or trim the width until it seats properly.



thickness and other variables. To ensure the best fit the drop boards should be patterned and cut for your individual boat.

The boards can be cut and sanded very much like wood using the same tools and techniques. It's quite simple to do and will take only a few minutes.



From inside the cabin, slide the hatch snugly back against the drop boards. Use a pencil to transfer the exact shape of the bottom of the hatch onto the forward face of the top drop board. Remove the board and carefully cut on the top of the line you have marked. Sand down to the line and you should have a perfect fit.

Install the boards in place and reinstall the hasp hardware for a finished job.